

COUNTRYSIDE
KENORA
BUILDING MATERIALS

Mini Homes



Office: 1(807)789-4450

Email: sales@countrysidekenora.ca

Website: countrysidekenora.ca



**You Dream It!
We Build It!**

Discover CSA Approved Mini Homes—crafted for your dreams, compliant with local codes, and ready to move anywhere. Simplify your life with our high-end, compact living solutions.



Modular Home

Based on the requirements of CSA Standard A277 and the National Building Code as detailed on the Specification Sheets inside the house

Maison Modulaire

D'après les exigences de la norme CSA A277 et du Code National du Bâtiment, telles que détaillées sur les feuilles de caractéristiques à l'intérieur de la maison.

ISSUE/SERIE

PRINTED IN CANADA
IMPRIMÉ AU CANADA

“Compact Living, Grand Lifestyle”

Mini Homes Options

Fill out your Choices on this Overview sheet as you look over the options on the next pages.

Floor Plan Style			
Forest View			
Country View			
Lake View			
Deck			
How Many Bedrooms			
Width			
Length			
Roof Style			
Gable			
Mono-slope			
Cottage			
Ceiling Style			
Vaulted			
Flat			
Roof Colour—Westman Steel			
Charcoal		Regent Gray	
Black		Stone Gray	
Green		Commercial Brown	
Red		Metro Brown	
Blue		Other	
White			
Exterior Wall Finish			
Metal			
LP Smartside			
Exterior Wall Colour—Westman Steel			
Charcoal		Regent Gray	
Black		Stone Gray	
Green		Commercial Brown	
Red		Metro Brown	
Blue		Other	
White			
Exterior Wall Colour—LP Smartside			
Chestnut Brown		Driftwood	
Scarlet Red		Olive	
Slate Blue		Sandstone	
Gray Stone		Charcoal	
Derby Brown		White	
Dark Ebony		Other	
Mahogany			

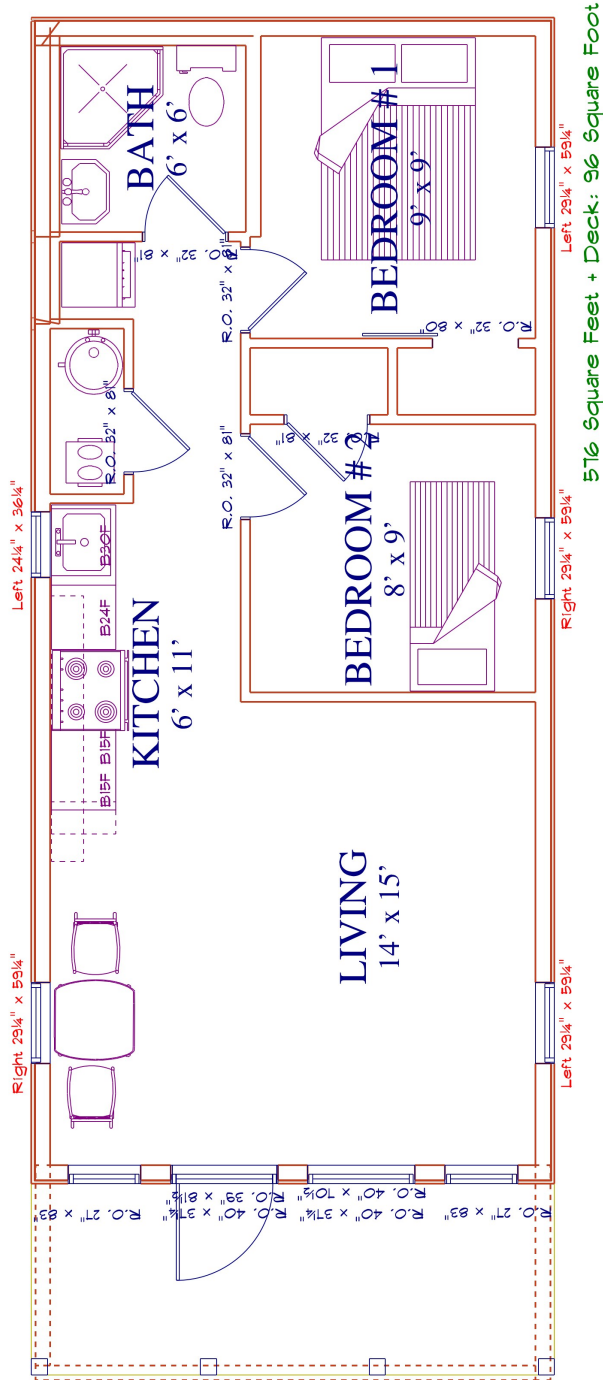
Window Colour	
White	
Black	
More Window Details	
Transom Windows	
Roof Pitch Angled Windows	
Interior Wall Finish	
Clear Pine	
White Washed Pine	
Painted Pine	
Paneling	
Ceiling Finish	
Clear Pine	
White Washed Pine	
Painted Pine	
Paneling	
Interior Trim	
Painted White	
White Washed Pine	
Doors	
Painted White	
Whitewashed, \$800 Extra	
Clear Pine, Extra	
Stained, Extra	
Barn Doors, Extra	
Floor Colour	
Inspire	
Multistrip Iron	

Kitchen Countertop Colour	
Asian Night	
Jamocha Granite	
Artic White	
Basalt Slate	
Kitchen Cabinet Base Colour	
Standard White	
Bathroom Vanity Base Colour	
Standard White	
More Details	

Floor Plan - 16x42 Forest View

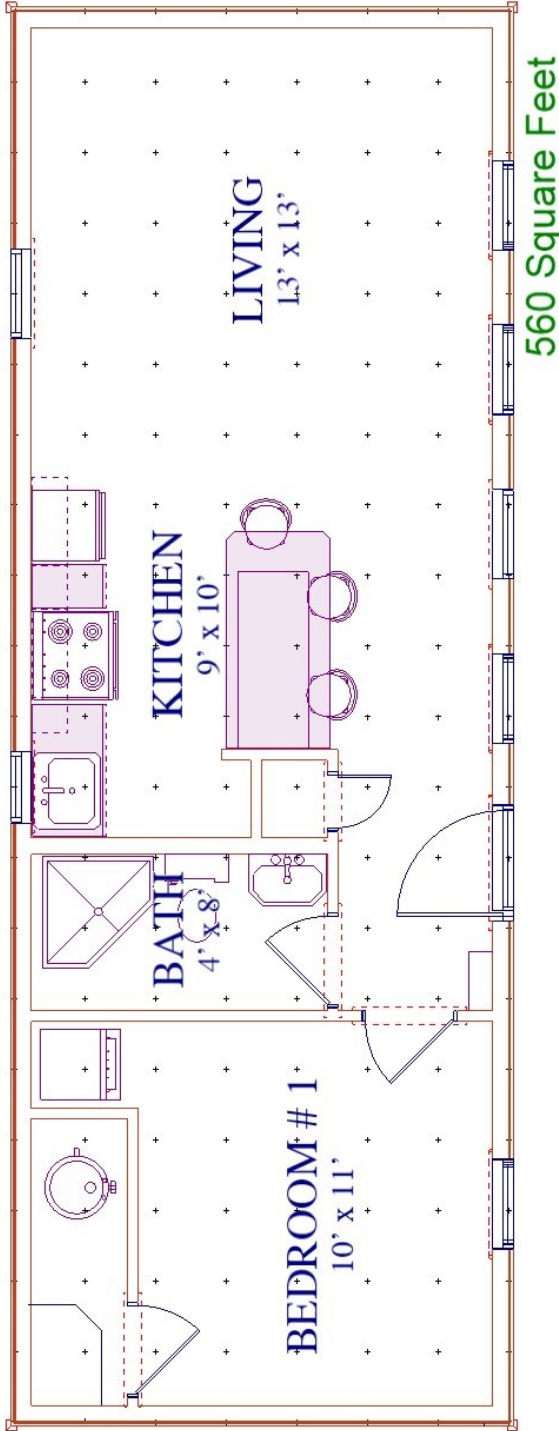
Sketch in your changes. 1 square = 2 ft

COUNTRYSIDE DISPLAY H162
 16 X 42



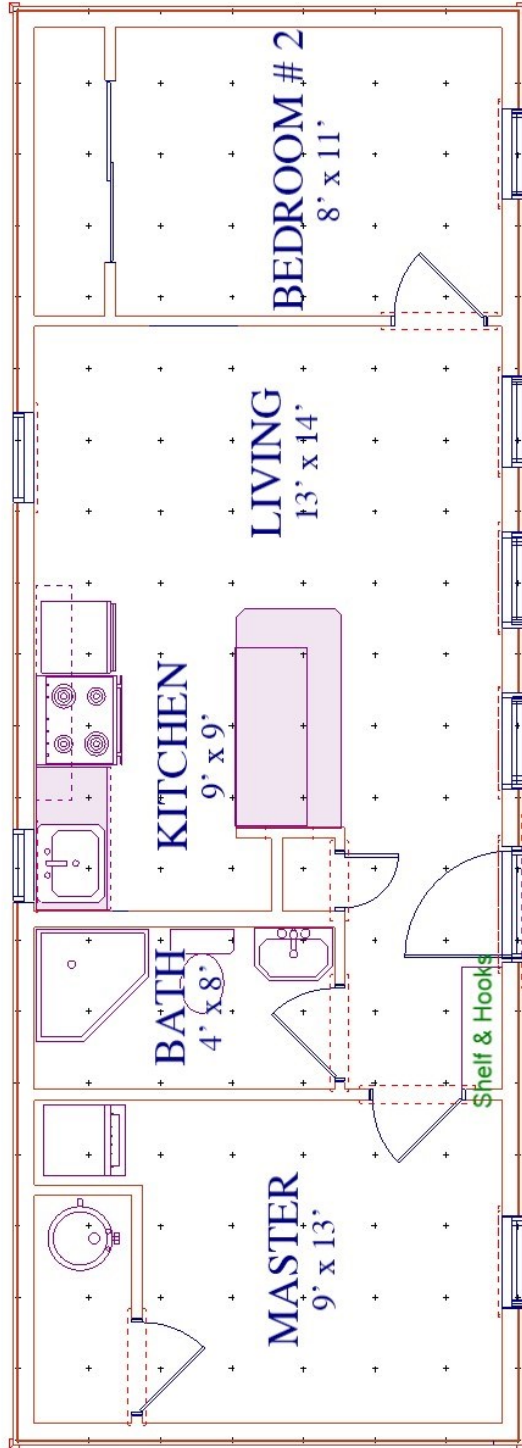
Floor Plan - 14x40 Country View

Sketch in your changes. 1 square = 2 ft



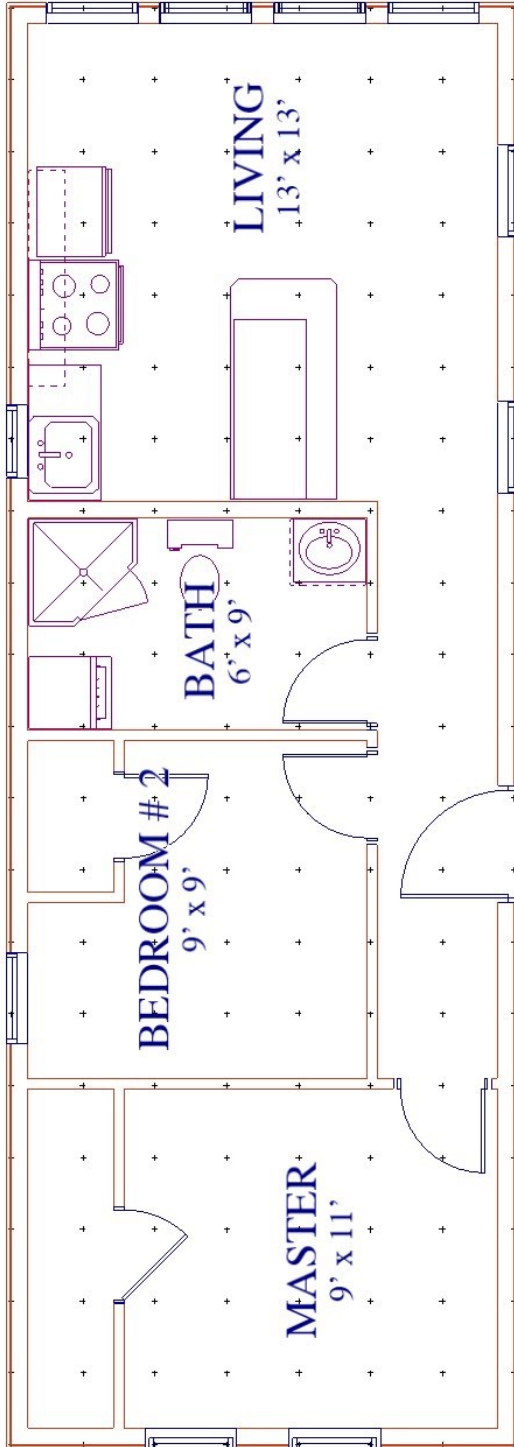
Floor Plan - 14x40 Country View, 2 Bed

Sketch in your changes. 1 square = 2 ft



Floor Plan—14x40 Lake View, 2 Bed

Sketch in your changes. 1 square = 2 ft



560 Square Feet

Roof & Ceiling



Monoslope Roof



Peaked Roof



2 Slopes for 2nd Story in Rear



Covered Deck



Vaulted Ceiling



Flat Ceiling

Exterior Walls



LP Smartside



Metal

BRIGHT WHITE QC 8783	CAMBRIDGE WHITE QC 8695	WHITE WHITE QC 8317	BONE WHITE QC 8273	STONE GREY QC 8305	REGENT GREY QC 8730
ANTIQUÉ LINEN QC 8696	IVORY QC 8802	LIGHT STONE QC 9367	GOLD QC 8276	HICKORY MOSS QC 9368	TAN QC 8315
BUCKSKIN QC 9202	INT'L ORANGE QC 8234	BRIGHT RED QC 8386	TILE RED QC 8259	DARK RED QC 8250	PACIFIC TURQUOISE QC 8258
MEDIUM GREEN QC 8329	DEEP WATER GREEN QC 8684	MELCHER'S GREEN QC 8307	WHISTLER GREEN QC 8093	SAPPHIRE BLUE QC 8261	SLATE BLUE QC 8260
ROYAL BLUE QC 8790	HERON BLUE QC 8330	CHARCOAL QC 8306	IRON ORE QC 8614	COFFEE QC 8326	METRO BROWN QC 8228
			Metal Wall & Roof Colours		
BURGUNDY QC 8011	DARK BROWN QC 8229	BLACK QC 8262			

LP Smartside Wall & Trim Colours (and Many More)

CHESTNUT BROWN	DARK EBONY	MAHOGANY	CACTUS	SCARLET RED	DRIFTWOOD
OLIVE	DERBY BROWN	SANDSTONE	SLATE BLUE	GRAY STONE	WHITE

Windows & Doors



White Windows & Door



Black Windows & Door



Angled Windows



White Windows Inside



Black Windows Inside

Interior Walls & Trim



Clear Pine Walls
& White Trim



Clear Pine Walls & Trim



White Painted Pine Walls



White Paneling Walls
& Clear Pine Ceiling



Painted Paneling Wall, White-
washed Pine Wall, & Clear Pine

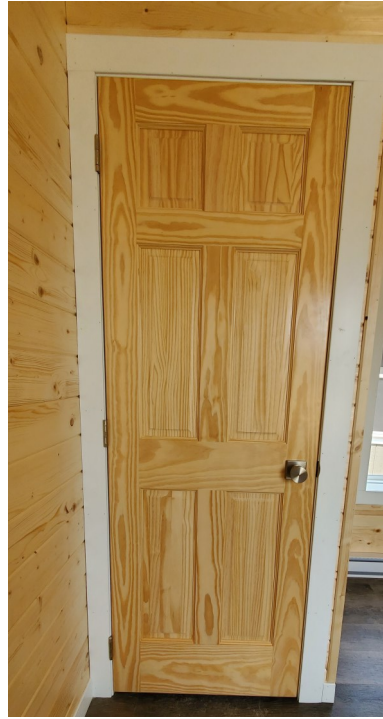


Whitewashed Pine Walls

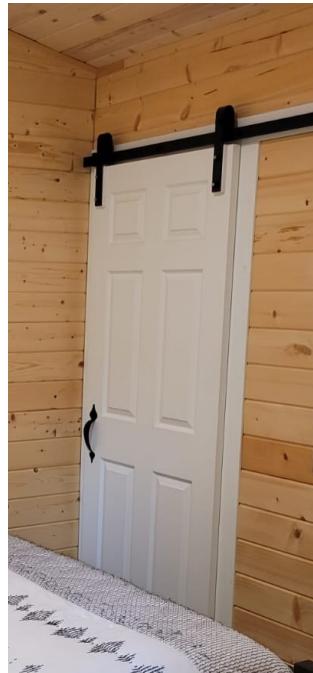
Interior Doors



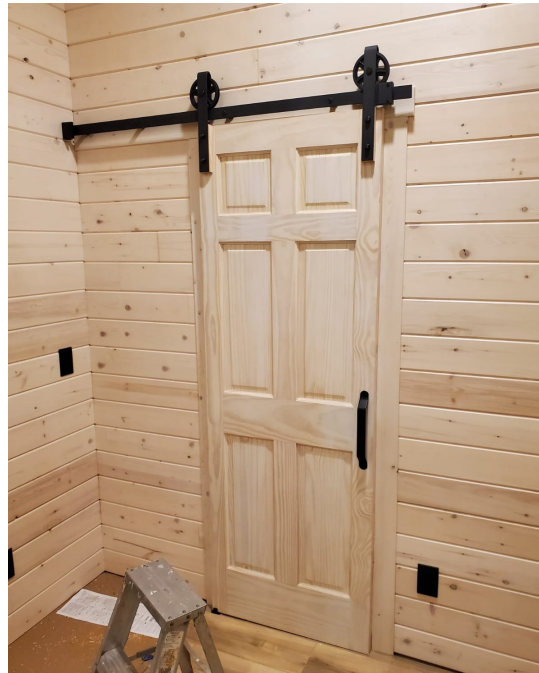
Standard – White Door



Clear Pine Door



White Barn Door



Clear Pine Barn Door

Stain Colours

Red Chestnut

Dark Walnut

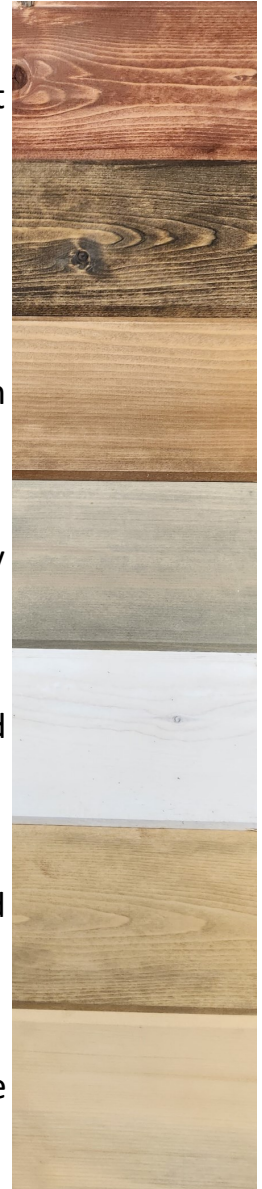
English

Natural Gray

Whitewashed

Fruitwood

Clear Pine



Counter Tops

ASIAN NIGHT

JAMOCHA GRANITE

ARTIC SNOW

BASALT SLATE



Jamocha Granite



Basalt Slate

Standard Options



Mineral Jet



Epoxied Wood



Marble



Floor



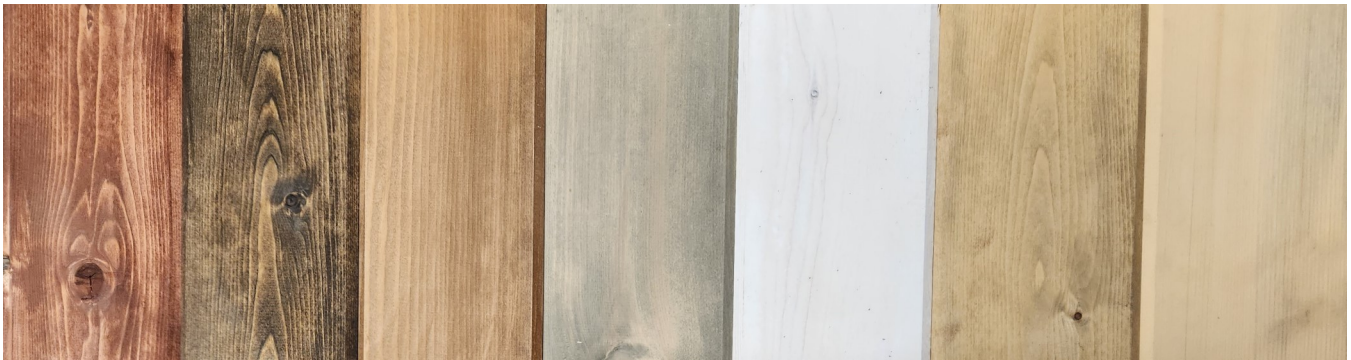
Inspire

Multistrip Iron

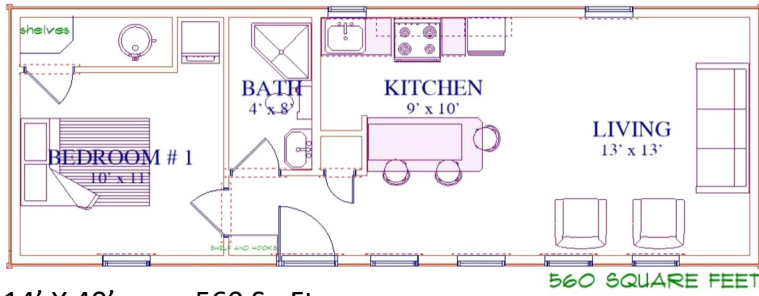


Stain Colors

- Red Chestnut
- Dark Walnut
- English
- Natural Gray
- White-washed
- Fruitwood
- Clear Pine



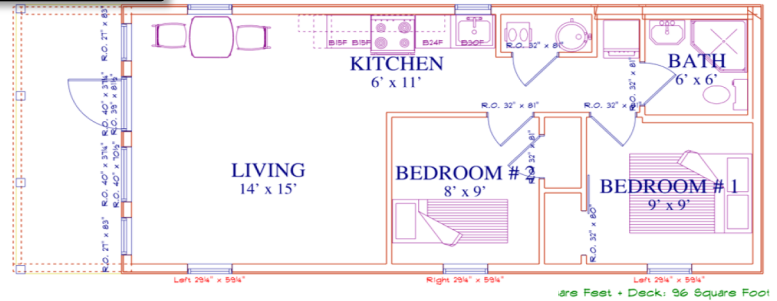
The Country View



14' X 40' 560 Sq Ft

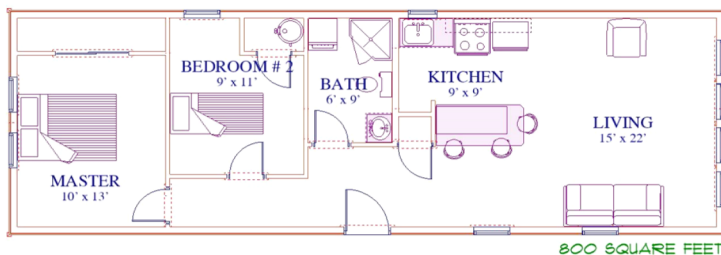


The Forest View



16' X 42' 576 Sq Ft + Deck 96 Sq Ft

The Lake View



14 16' X 50' 800 Sq Ft



Standard Specs & Price list

CSA Certified



Kitchen

- ◆ Single Kitchen Sink
- ◆ Fridge
- ◆ 30" Range
- ◆ 36" X 72" Bar Counter

Bathroom

- ◆ 38" X 38" Neo Angle Shower with Glass Door
- ◆ Vanity Sink
- ◆ Toilet
- ◆ Hook-ups for Washer & Dryer Stack

ON Insulation

- ◆ Roof – R50
- ◆ Wall – R32
- ◆ Floor – R34

Doors & Windows

- ◆ 28" Interior Doors
- ◆ 36" Entry Door
- ◆ 24" X 30" Kitchen Window
- ◆ 30" X 60" Dual Pane Egress Windows

Exterior

- ◆ Metal Roof
- ◆ LP Smartside - Urethane

Other

- ◆ Baseboard Heaters
- ◆ Heaters on Thermostat
- ◆ Air Exchanger
- ◆ 40 gal Hot Water Tank
- ◆ 100 Amp/220 Volt Panel
- ◆ LED Light Fixtures
- ◆ Vinyl Plank Flooring

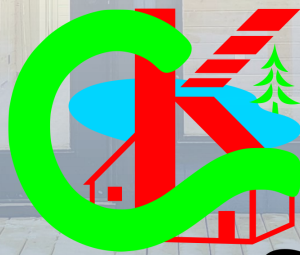
Hook Ups

- ◆ 100 Amp Electrical
- ◆ ½" Water Supply
- ◆ 3" ABS Sewer

Candlewood Tiny Homes Pricing

	MB	ON/SK
18x30 Forest View	125,000	141,000
16x42 Forest View	145,000	155,000
18x40 Forest View	153,000	165,000
14x30 Country View	88,000	106,200
14x40 Country View	99,000	111,200
16x40 Country View	128,000	148,000
16x50 Country View	172,000	192,000
18x40 Country View	147,000	173,000
18x50 Country View	195,000	216,000
Clear Lake & Mountain View can't go to ON		
Clear Lake	198,000	198,000
Mountain View	280,000	300,000
Includes		
Delivery to Northwestern Ontario		
Fridge & Stove		
Spot ready for stack washer & dryer		
Baseboard Heating		

**Ask About
Customization**



COUNTRYSIDE
KENORA
BUILDING MATERIALS

2010 Hwy 17 West

Keewatin, Ontario

1(807)789-4450

sales@countrysidekenora.ca

www.countrysidekenora.ca